

Aroostook Trusses Inc. Engineered Roof and Floor Trusses



Engineered Roof and Floor Trusses
Engineered Wall Panels

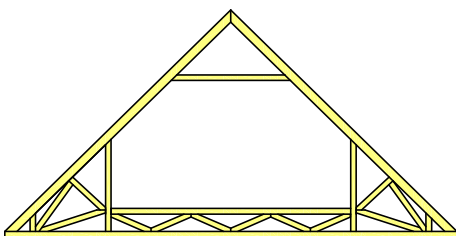
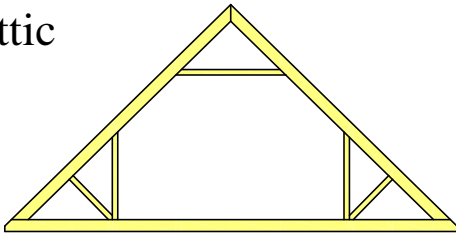


From concept...



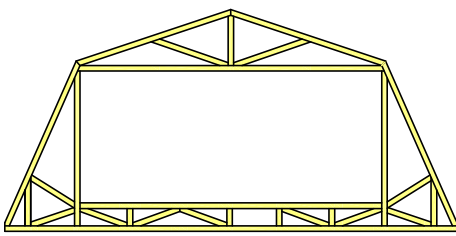
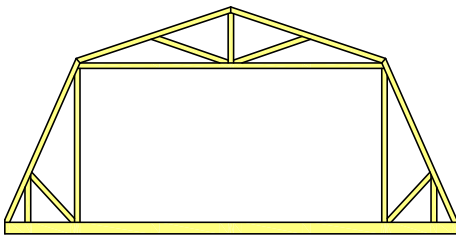
to construction

Attic

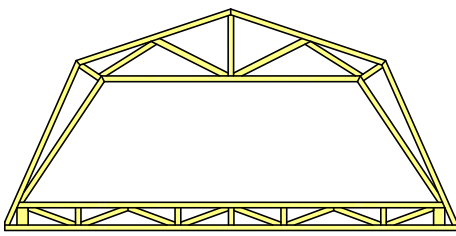


Attic w/floor

Gambrel

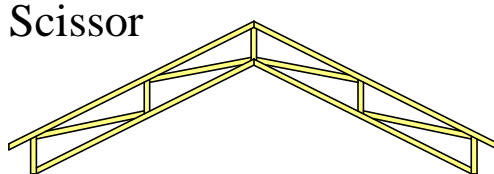
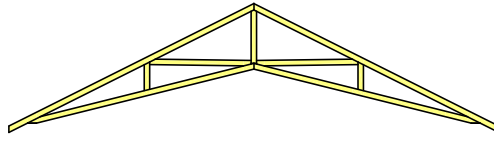
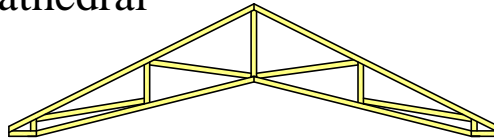


Gambrel w/floor

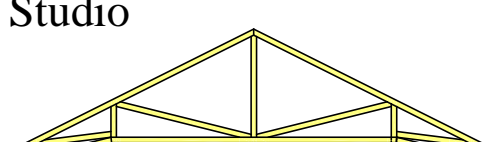
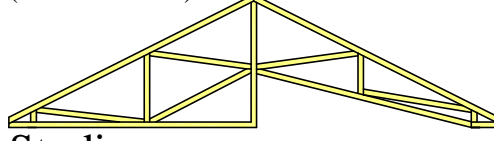


Open Gambrel

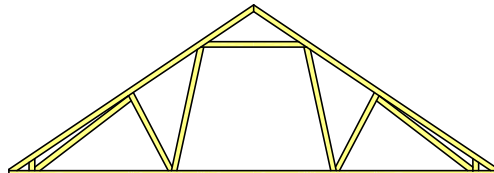
Cathedral



True Cathedral
(Parallel chords)



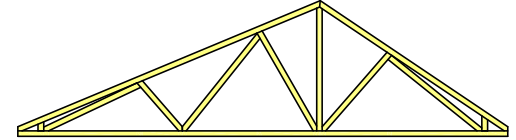
Vaulted Tray



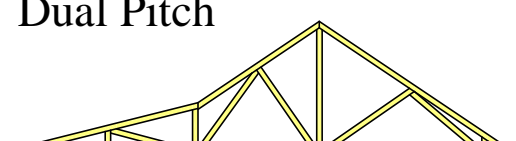
Tray



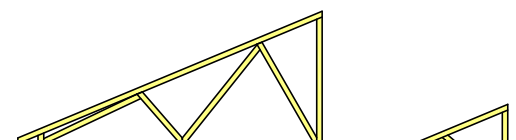
Storage



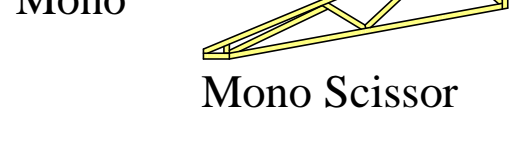
Dual Pitch



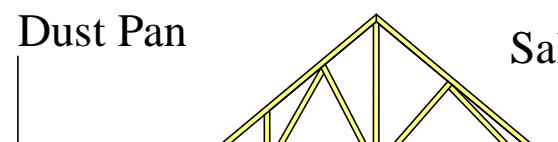
Farmers Porch



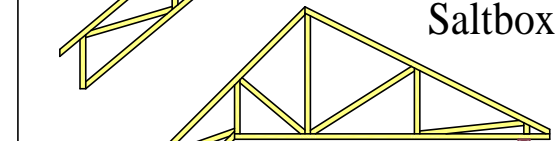
Mono



Mono Scissor



Dust Pan



Saltbox

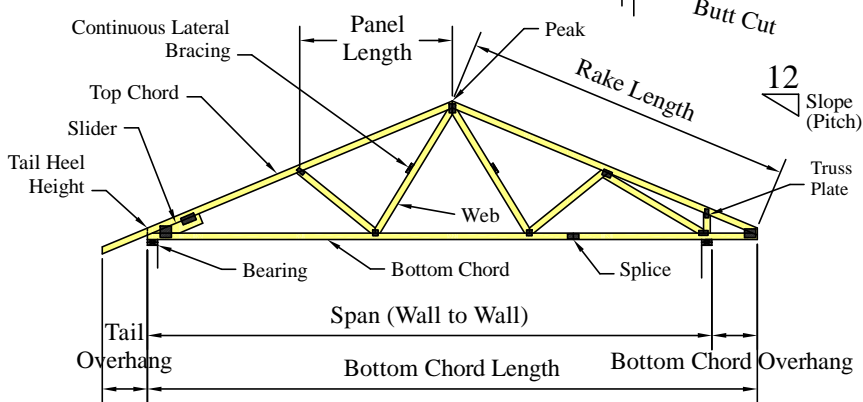
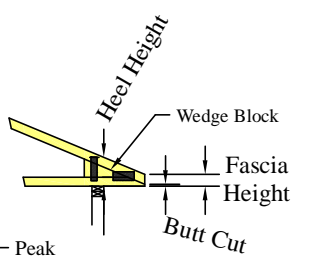


Saltbox Cape



w/floor add on

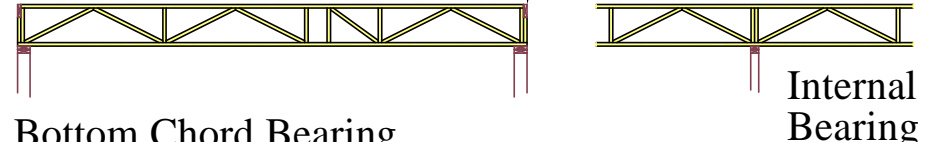
Truss Parts



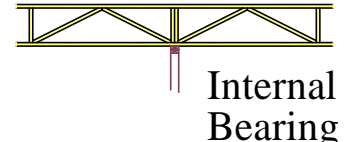
Floor Trusses



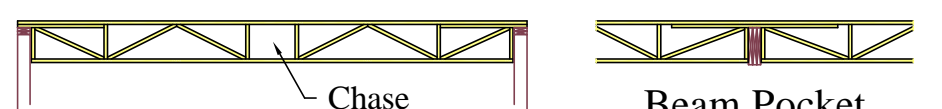
Rim Board Notch



Bottom Chord Bearing



Internal Bearing



Top Chord Bearing



Beam Pocket



P.O. Box 548 - 655 Missile Street - Presque Isle, Me. 04769
Ph 207-768-5817 - Fax 207-768-5818 / www.arostooktrusses.com